



◆ To beth

## Watershed Work & Wisdom

April 2012

779 Chadderton School Rd, Oakland MD 21550

### Plans for 2012

- ◆ Stream Wading— week-ends in April
- ◆ Marcellus Water Monitoring— on-going
- ◆ Sediment Plan & Eurasian Watermilfoil
- ◆ Bethnic mats— advise on use
- ◆ Formation of neighborhood groups

### FoDCL Working Group



Working Group meeting end of January

We met in January to develop our 2012 work plans. Participants included: Paul and Pat Weiler, Charlie Miller, Ellen Williams, Brian Greenberg, Carol and Bill Heinz, Barbara Beelar, Ralph Schmidt, Craig Dart and Mike Ahearn. Focus issues for 2012: 1) push forward

### What happened to winter?



February 29, 2012— who would believe!!

on the DNR Sediment Study; and 2) urge controls on Eurasian Watermilfoil., the invasive plant now in DCL.

We will expand our base by connecting with neighborhood residential groups. In some areas there are HOAs, POAs or road associations. In older sections of the lake there are no organized neighborhood groups. If you are a member of such a group, consider inviting us to make a presentation on lake aging processes and actions needed. If there is no such neighborhood group near you, we will assist you to form one.

Three new neighborhood groups are now in formation. We plan to link these “grassroots” groups. There are many different experiences and challenges we residential property owners face. **We need to be informed and all the voices must be heard.**

## Stream Wading.

Contact us to participate in sampling of DCL tributary streams. We promise you a great adventure. You will never look at the lake or its streams in the same way again! We need volunteers for the following dates:

3/31-4/1, 4/7, 4/14-15, 4/21-22, 4/28-29..

## Marcellus Water Monitoring.

Throughout the County, DNR has identified sites downstream from mineral leases and potential sites for Marcellus Shale drilling. Baseline data on water quality must be collected prior to drilling so we will have a firm basis from which to monitor any changes.

Friends of Deep Creek Lake has agreed to take responsibility for the 9 sites in the lake watershed.

**Penn Cove stream**

**Shingle Camp stream**

**Marsh Run— 2 sites**

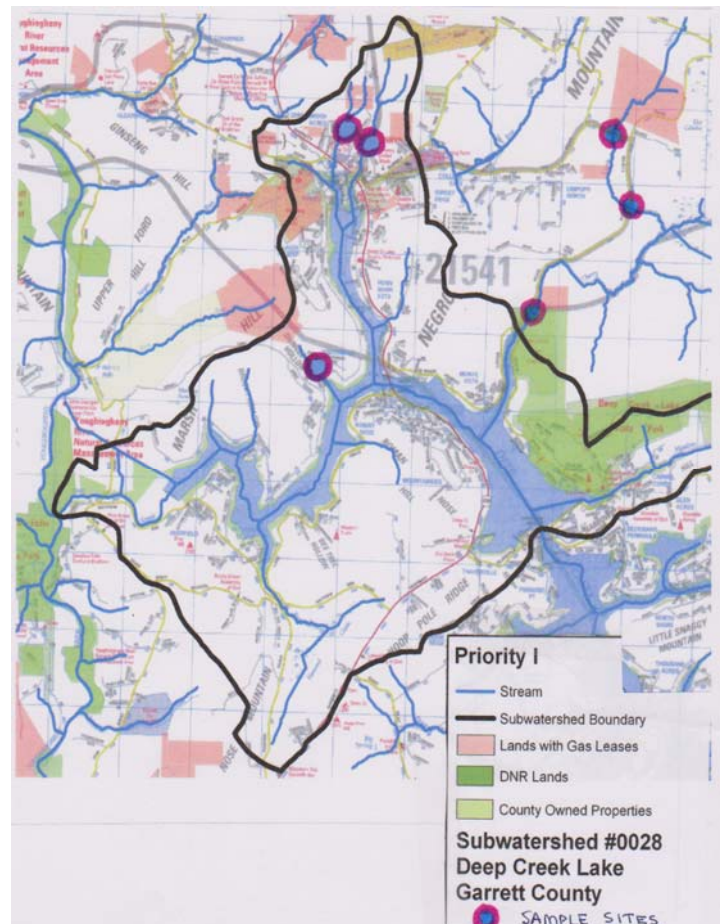
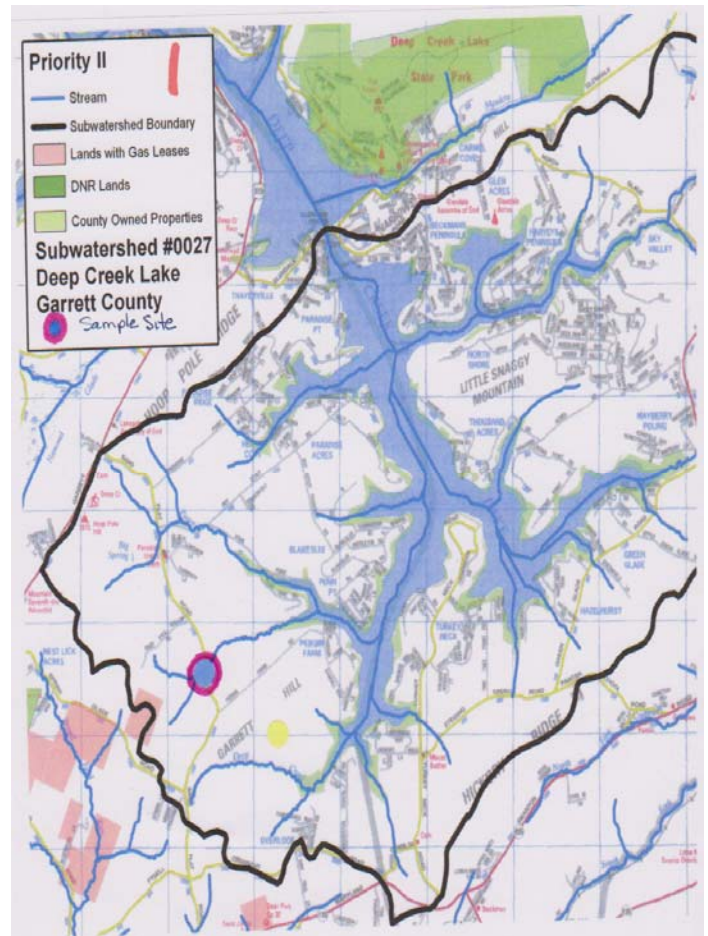
**Cherry Creek— 3 sites.**

We need teams of volunteers to take each site and commit to conducting the sampling weekly. The sampling is easy and only takes 15 minutes. We provide the equipment, training and oversight. There is a local DNR staff person providing back up for all this work.

This is a huge undertaking. This is a critically important program, which will ensure that our lake is protected. We need to support what is probably the best such program in the US.,

***SIGN UP TO VOLUNTEER FOR STREAM WADING OR MARCELLUS SHALE MONITORING***

Email us at [contact@friendsofdcl.org](mailto:contact@friendsofdcl.org) ; write to FoDCL, 779 Chadderton School Road, Oakland MD 21550.



**Eurasian Watermilfoil (EWM)** DNR has yet to release a 2012 EWM study and control plans. EWM does appear to grow throughout the winter at DCL. First sightings of fresh floats were February 29.

**To bethnic mat or not?** DNR now permits bethnic mats around your dock. These mats are not effective control of EWM which grows in waters 6 to 22+ feet in depth. Mats do cover nuisance SAVs, but these are beneficial and do help to root sediment, reducing muddy waters. Contact us for advice on whether these mats make sense for your area. The mats are yet another example where private property owners are paying for management of our state owned lake.



**DNR Sediment Study Phase II.** Background. In the original 2010 plan, Phase II was to include in depth assessment of impacted coves, determination of sediment sources, and plans for remediation. Budget: \$180,000. Early 2011, DNR reported no funds were available. But in August, DNR announced they had \$65,000

Taking a very important step, the County agreed to match DNR funds to become a partner in the study. The stated purpose: 1) have an input in the study design; and 2) develop a working partnership with DNR.

At the fall, the Policy and Review Board recommended DNR pay for the whole study. Rationale: 1) everyone acknowledges sediment remediation costs will fall on property owners; and, 2) the lake owns the lake and should be responsible for all lake studies. The PRB recommendation was ignored by both the County and DNR.

In March, 2012. DNR sent the County a draft design. We found draft study incomplete and flawed.

The original focus has been expand to a study of the whole lake. DNR has added irrelevant tasks ( e.g. a manual for state officials/developers); duplicate work (another bathymetric study); and, items which Lake Management staff should be doing, not DNR science staff or consultants.

It is incomplete. omitting study of major source of sediment impact— tributary streams. The County is responsible for watershed streams. A complete study must include a parallel assessment of these streams..

Commissioners voted 2-1 to provide \$115,000 for this flawed and incomplete study, becoming the majority funder without addressing flaws and omission of tributary streams. A few lake stakeholders requested a meeting with the Commissioners but they refused outright.

The County Commissioners have decided to become involved in lake and watershed issues. To be effective they must build a partnership with residential lake stakeholders.. They have debuted their involvement without adequate public notice and then a refusal to meet with stakeholders. This approach does not bode well for the future. Once a complete Sediment Study is available, there will be very difficult, likely contentious, policy debate on sediment remediation and costs. We must build a solid foundation today in anticipation of such debates. We believe the relationship needs to be based on an open, partnership between the County and residential lake stakeholders. Further the County must assume responsibility for the watershed improvement planning and implementation.

**Residential Neighborhood Groups.** Over the past 3 years we have made presentations to various groups of residential property owners. We find this format is most productive because it provides a comfortable opportunity for open dialog. It also enables us to take our watershed framework and focus on a particular part of the lake, learning about challenges faced in different areas of the lake, our different and common perspectives.

In 2012 we are working to expand number of presentations to more groups. We have begun making connections among these groups, building a strong voice for residential property owners.

We invite you to explore such a presentation for your neighborhood association or a house party of neighbors.

Reach us at [contact@friendsofdcl.org](mailto:contact@friendsofdcl.org) or 779 Chadderton School Road, Oakland, MD 21550.

## Updates

- ◆ **Appeals on Property Tax Valuation.** We have heard a number of property owners they have filed a petition to appeal their valuation. Of all those we have heard from, all but one received a reduction. We know there have been almost \$1 million in tax valuation reduction just in Pawn Run Cove. If you file a petition this year, it will be reviewed in 2013. Download the appeal form at <http://www.dat.state.md.us/sdatweb/petitnrv.pdf>. If you want help, we have a very knowledgeable volunteer available to advise your and prepare your petition.
- ◆ **New proposal.** We have submitted a follow up to our study of County Road culverts. This year we plan to focus on the 6 miles of SHA Route 219 in the DCL watershed. There is substantial road runoff along this highway. Take a look the next time you at on 219! We also intend to continue our work with the County on adoption of best management practices and address specific high priority areas identified in 2011.

### **DCL residential Canada Geese impact water quality and sediment accumulation**



We have two kinds of Canada geese.— transient and resident. The residential geese are descendants of decoy flocks brought east in the 1930s. They return to where they were born, using the same nesting and feeding sites year after year. They live 15-25 years, much longer than transients, breeding earlier and laying larger clutches of eggs.. These geese threaten water quality and contribute to sediment accumulation.

A goose “produces” one pound of high nutrient droppings daily, threatening the waterways where they congregate. A flock of 100 Canada Geese settled into Deep Creek Cove this winter. Together they have been producing 3,000 pounds a month of “fertilizer”. This cove now has a blue-green algae, *spirogyra*, indicating the high nutrient levels. DNR should implement control measures to reduce or eliminate the resident geese folks.

**Protect the Lake—Scoop the poop! Please don't sweep geese poop off your dock into the lake!**



Promoting stewardship,  
conservation and restoration in the  
Deep Creek Lake watershed

779 Chadderton School Rd  
Oakland, MD 21550

[www.friendsofdcl.org](http://www.friendsofdcl.org)

[contact@friendsofdcl.org](mailto:contact@friendsofdcl.org)

## 2011 Accomplishments

To realize our mission of promoting stewardship, conservation and restoration of Deep Creek Lake, Friends of Deep Creek Lake has set 5 goals to guide our work.

### Goal #1 Water Quality Monitoring

Led 15 volunteers sampling 13 sites for benthic macro-invertebrates, as part of the DNR Stream Wading program.

Surveyed distribution, density, GPS coordinates of Eurasian Watermilfoil Glendale Bridge south.

Additional EWM observations, samples and photo-documentation were provided to DNR.

Ongoing monitoring of southern section of the lake for signs of aging--sediment, algal blooms.

### Goal #2 Research and Analysis

Release of the *State of the Watershed Report*, compiled by UMD/EcoCheck under grant from Chesapeake Bay Trust. This is the only comprehensive assessment of existing data on the lake and watershed. Includes specific recommendations expansion of sampling for more complete assessment.

Conducted extensive assessment of County Road culverts and runoff impacts into the lake. Over 180 culverts were located and rated. Funded by Constellation EcoStar.

Volunteers spent hours gathering research on Eurasian Watermilfoil, an invasive species now present in DCL. Provided information on best management practices on prevention and control.

### Goal #3 Compliance with Federal, State and local laws and regulations

Notified MDE about 2 sites with water quality impairments found during Culvert Assessment.

Notified MDE about 2 sites with water quality impairments found during Culvert Assessment.  
Reported poor water quality to The Nature Conservancy in their Red Run conservancy lands.  
Reported to County of the existence of a trash dump on Red Run tributary off Foster Road.

#### **Goal #4 Community Education**

Nine informational articles and 8 Letters to the Editor appeared in The Republican  
*Float your Boat Workshop* held July; 50 people attended.  
July 5 presentation to County Commissioners public meeting on lake aging and issues.  
Presentation to Deep Creek Yacht Club on lake aging, stewardship action recommendations.  
Presentation to Hickory Ridge road association on state of Chadderton School Cove.  
Presentation to Stillwater Property Owners Association on lake aging.  
Produced 5 electronic newsletters; distributed to email list of 700  
One FoDCL Watershed Work and Wisdom newsletter mailed to 1900 property owners  
Various Fact Sheets on Eurasian Watermilfoil, sediment accumulation, lake management, costs.  
Informational letter to property owners impacted by EWM.  
Hosted tour of lake for County Commissioners with debriefing discussion.  
Led County Commissioners on tour of County Road culverts, met with impacted property owners.  
Second Annual Stewardship Awards.  
Participation in Autumn Glory Parade.  
Consultation with Bay Back Association, Deer Have Yacht Club and various stakeholders.

#### **#5 POLICY AND ADVOCACY**

Position paper on water release issues to reframe water level issue.  
Recommendations to County Commissioners on policy changes for road design and maintenance.  
Briefing of Policy and Review Board on Eurasian Watermilfoil to adopt pro-active role.  
On-going work with Commissioners, DNR and PRB to assure funding of Phase II of Sediment Study in 2012, advocating focus on impacted coves and inclusion of additional coves know to have problems.  
Advised County Commissioners prior to the meeting with Secretary Griffin.

Donations are our core source of support. Friends of Deep Creek Lake is a non-profit, tax-exempt watershed organization. Our core support comes from donations from lake stakeholders committed to promoting stewardship, conservation and restoration of the Lake and the watershed. A donation to Friends of Deep Creek Lake is a wise investment. Your donation supports volunteer efforts to protect and preserve our wonderful lake, as well as protect your own financial investment in our aging natural resources. And donations are tax deductible!

Last year we raised \$13,000+ dollars. We spent over \$10,000 on community educational materials— from Newsletters like this to multiple Fact Sheets on challenges facing the lake.

**CONTEST: SEND US YOUR EMAIL AND YOU COULD BE A WINNER!!!!**

It costs over \$4,000 to print and mail this newsletter. Help us direct your donations more effectively. Provide us with your email address so we can reduce costs and save trees.

For all who respond, we will put your name in a “hat” . On Memorial Day we will draw winners to receive gifts from local merchants. What a good way to start the summer— with a Gift Certificate and satisfaction you have contributed to protecting your lake!

-----Clip here and return to : FoDCL, 779 Chadderton School Road, Oakland MD 21550-----

NAME

PRIMARY ADDRESS

CITY/STATE/ZIP

EMAIL:

LAKE ADDRESS

SECTION OF DCL

Donation: \_\_\_Friend@\$30 \_\_\_Steward@\$100 \_\_\_Lakekeeper@\$250 \_\_\_Youth/Senior @ \$20.

Feedback Please: What are your specific concerns? How are we doing?

Friends of Deep Creek Lake  
779 Chadderton School Road  
Oakland Maryland 21550  
contact@friendsofdcl.org

*Note of explanation: DNR has you listed as a buffer strip permit holder which is why you are receiving our newsletter.*

- ◆ *There are roughly 1550 lake front property owners.*
- ◆ *There are over 300 common dock permit holders, representing many hundreds of lake stakeholders who are often “out of the loop”.*

*If you are the common dock contact . . . . .*

- ◆ *How we can distribute our Newsletter to your association members?*
- ◆ *Can we provide an informational meeting or materials your members?*
- ◆ *What are the areas of concern for you and your association members?*

***It is important all residential property owners and lake stakeholders be knowledgeable and involved In stewardship, conservation and restoration of our wonderful lake!***