



Watershed Work & Wisdom

July 2012

779 Chadderton School Road, Oakland Maryland 21550

contact@friendsofdcl.org

<http://friendsofdcl.org>

Important Upcoming Events

August 11: Forum on Marcellus Shale and Deep Creek Lake

Marcellus Shale drilling is an extremely complex topic with potentially wide ranging impacts to Deep Creek Lake. Come join us from 9-11am on Saturday, August 11 at Garrett College (Continuing Education Building—Room C205) to hear from a range of panelists with varying perspectives as the “drill down” potential impacts of fracking. Loads of informational handouts; lots of extra time for the Q&A session (see enclosed flyer for more details).

Please join us at this important event!

August 18: Conversation with Lake’s Local Leaders

We are many unsung heroes help support local lake communities as heads of home owner associations and other neighborhood groups. Their volunteer efforts are essential to the quality of the lake and Friends of Deep Creek Lake wants to honor them. We are at a crossroads, and there are critically important events on the horizon which will shape the future of our lake. How can we work together to prepare for these changes? This meeting will explore the issues and challenges in lake protection and investigate options for expanding cooperative efforts. 9-11am, location to be determined.

SHA Route 219 Culvert Assessment Project

FoDCL consultants Heather Fisher and Vance Young have completed the field work assessment of 53 culverts in the Rt. 219 DCL watershed. As our work on County roads last year indicated, many culverts pose no threat to the DCL water quality. However, we have found the “Dirty 8,” — Rt. 219 culverts which are creating very serious environmental impacts. Our next steps will be to conduct water quality sampling and submit the work to the State Highway Administration, which is very interested in our work. We anticipate the SHA will make plans to address the negative impacts of these culverts on Deep Creek Lake water quality.

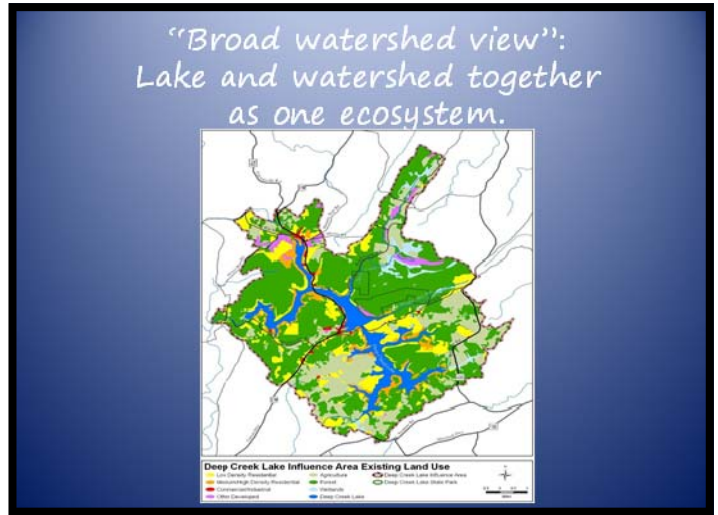


Lake Lowdown Newsletter— Join the mailing list!

The new FoDCL newsletter, available in electronic or hardcopy formats, covers timely, specific issues, including boating safety and cutbacks in police funding, benthic mats, and “monkey” business at the lake—a commercial pontoon boats and a mini-marina. Tell us which format you prefer — send an email to contact@friendsofdcl.org or write to Friends of Deep Creek Lake, 779 Chadderton School Road, Oakland, Maryland, 21550.

Why Friends of Deep Creek Lake is a Watershed Organization

In 2008, Friends of Deep Creek Lake (FoDCL) chose to become a *watershed* organization, not simply a lake organization. Why? What's the difference?



Though Deep Creek Lake is man-made, it is part of a dynamic ecosystem that includes the lake, tributaries, and the land bounded by these streams — the watershed. The health of each part of the watershed affects the health of the others. We became a *watershed* organization to protect all parts of the ecosystem. The sustainability of our lake is threatened without an integrated watershed approach.

Current management is fragmented: the State is responsible for the lake, and the County is responsible for the tributary streams of it. These two management bodies do not coordinate on common goals for DCL—such as sustainability—or on ways to achieve it. A broad watershed approach requires both governmental units to work together in planning, research, program implementation, and financing.

The Maryland Department of Natural Resources (DNR) clearly understands the vital importance of a watershed management framework to DCL. On November 11, 2011, DNR secretary John Griffin summed up his presentation to the Board of County Commissioners saying **“Our greatest collective challenge... is to take a watershed approach to future lake management.”**

<http://www.garrettcountry.org/Commissioners/Minutes%5C2011%5C2011%5C11-15-11.pdf>

Unfortunately, few lake stakeholders heard Secretary Griffin. Why is his call of critical importance to all lake stakeholders concerned about the future of the lake?

- As the head of State Agency responsible for lake management, Griffin publicly acknowledged the challenge is one of integrated watershed management;
- His challenge was directed to the County Commissioners, urging them to become partners and to assume responsibility for watershed management.

DCL is missing out on yet another State effort. Maryland is allocating staff and financial resources to Watershed Implementation Plans (WIPs), most notably in the Chesapeake Bay. In an effort to clean up the Bay, the EPA put Maryland on a strict “pollution diet,” with a clear mandate that Maryland must reduce nitrogen, phosphorus, and sediment pollution in the Bay watershed.

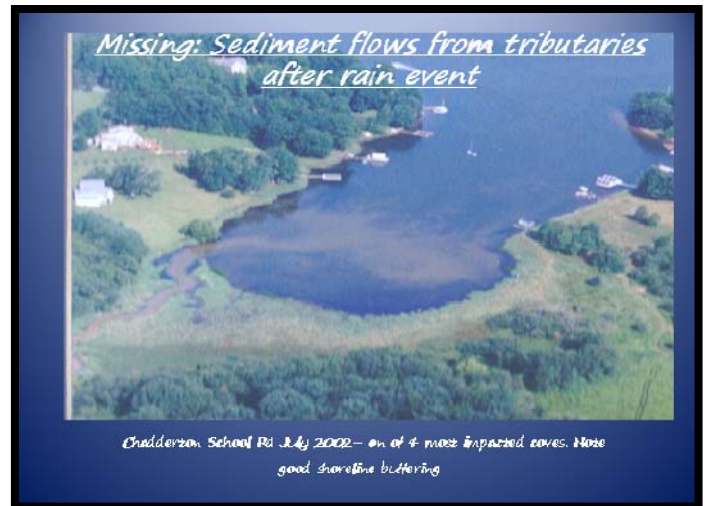
Elsewhere in the State, county and municipal governments are responsible for developing, planning, controlling, and accountability for WIPs. They are developing strategies and setting milestones for pollution reduction. State and Federal governments are closely monitoring this work to ensure success. In sum, other local Maryland governments are work-

ing on WIPs. The work is impressive and results are beginning to be seen.

Here in Garrett County, our only involvement is that our tax dollars are helping to finance the Bay's WIP efforts. Despite the need for similar programs in western Maryland, the disturbing truth is that the fees for the Chesapeake vanity license plates do not benefit Deep Creek Lake—they go directly to WIP efforts that help restore the Bay. DCL is not getting a penny of benefit because the State does not require our section of Garrett County to participate—and the County is not asserting the need for watershed improvement plants to address the challenges evident in our watersheds! (Read an excellent report on "Cleaning Up Local Waters and the Bay: Ideas and Best Management Practices in Maryland's Watershed Implementation Plans" on our new website: <http://friendsofdcl.org/>)

The questions for taxpayers in western Maryland is

this: If (as the DNR Secretary urges), a watershed improvement approach is best practice for the rest of the State and good for DCL, why have lake managers and the county refused to adopt it?

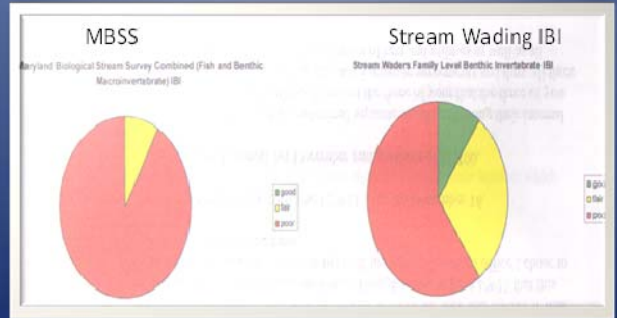


Missing: other impacts on streams



Beaver dam on Chadderton School Cove stream-geo-referencing map

Missing: water quality and sediment core sampling



Key: Green- good Yellow- fair Orange -- poor

The new County Fairgrounds parking lot a new site "of serious concern".



Missing: large impermeable surfaces impacts



Center for Watershed Protection scientists identified a "sites of serious concern".

Absence of a Watershed Perspective—DNR Sediment Study Phase II

FoDCL has led the effort to get DNR to address sediment accumulation in the lake. Earlier this year, the DNR released a draft of a "Phase II" study plan to track sediment build-up. FoDCL reviewed the document and wrote to the County Commissioners, identifying significant gaps in the plan. Among the most glaring problems, the study does not track the watershed sources of sediment entering the lake. While factors in the lake, particularly shoreline erosion, contribute to sediment accumulation, tributary streams and land uses are major contributors. Unfortunately, the watershed impacts are not in the Phase II sediment study plan.

This is why we are a *watershed* advocacy organization. This is why we need your involvement—by volunteering, becoming an educated stake holder, adding your voice to watershed protection. And, this is why we need your financial support for our ongoing efforts to ensure a sustainable future for our wonderful Deep Creek lake.

Friends of Deep Creek Lake Presents:

Marcellus Shale and Deep Creek Lake

August 11, 9am to 11am

Garrett College, Continuing Education, Room C205

Exploration of Marcellus Shale drilling
–issues, risks, protections & perspectives–
focusing on lake & property impacts.

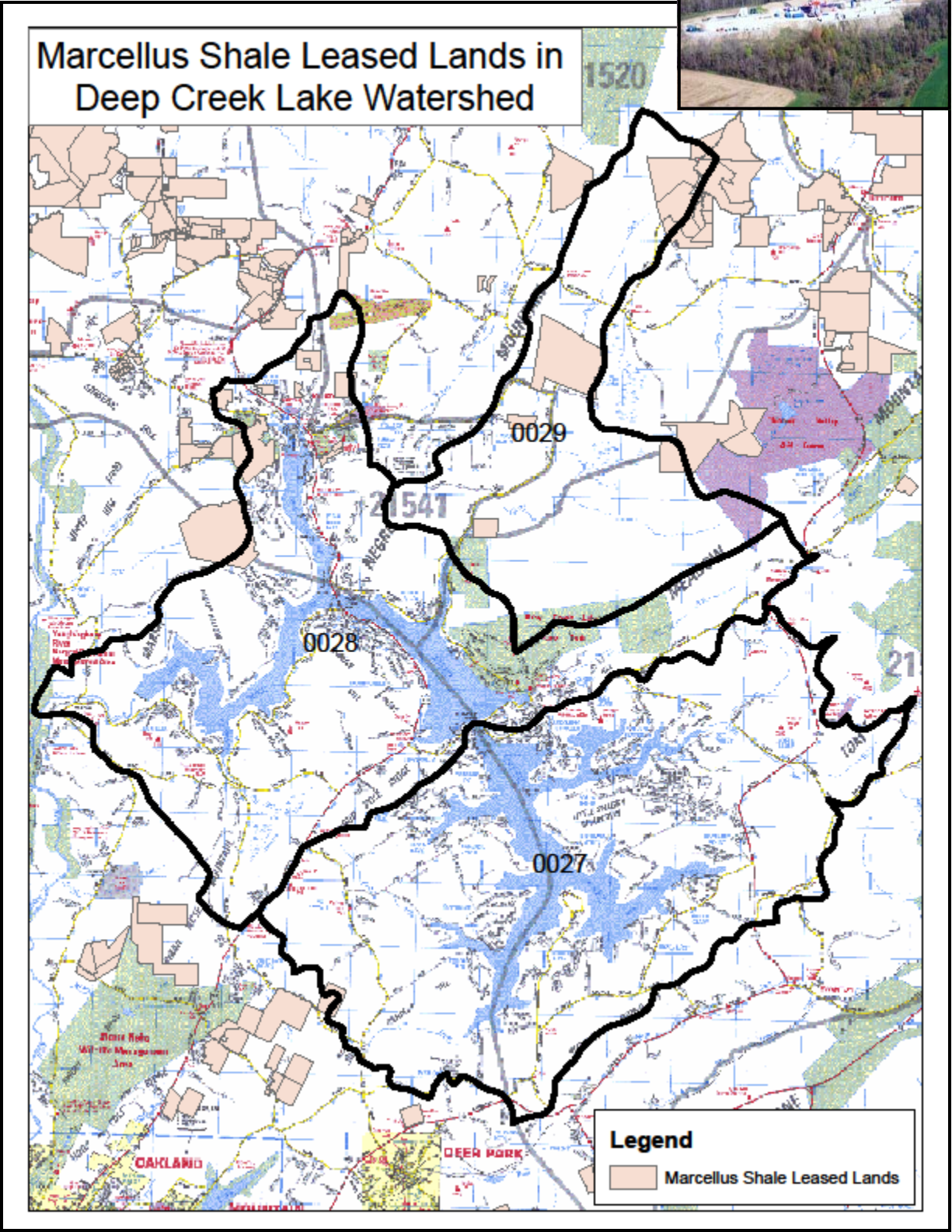
Moderator: Brigid Kenney, *MDE Senior Policy Advisor, staff Marcellus Shale Safe Drilling Initiative Advisory Committee
(Governor's Commission)*

Presenters Include:

- **Michael Bell**, *DCL homeowner, businessman, taxpayer, George Washington University professor*
- **Billy Bishoff**, *farmer, Garrett County Farm Bureau*
- **Paul Durham**, *Legislative Consultant Garrett County Board of Realtors, former Deep Creek Lake Manager*
- **Jonathan (Smiley) Kessler**, *businessman, member Greater Cumberland Committee Marcellus Shale work group, member DCL Property Owners' Association work group on Marcellus Shale*
- **Paul Roberts**, *co-owner Deep Creek Cellars, "citizen" appointee to the "Governor's Commission", member Citizen Shale*
- **James (Smokey) Stanton**, *member County's Marcellus Shale Natural Gas Advisory Committee, President Youghiagheny River Watershed Association*

Shingle Camp Cove, DCL. Mineral lease on top of mountain in background

(Photo courtesy of Paul Weiler)



Map generated by Maryland Department of Natural Resources

Announcing the debut of the new **Friends of Deep Creek Lake Website!** The website features a comprehensive source of accurate information, thoughtful analysis, and links to important documents and resources, along with cool photos, intriguing maps, other neat stuff, and lots more coming! Accessible on your computer, iPad, smartphone, and pretty much everywhere, the website was designed to help you join the effort to promote conservation, stewardship and restoration of the lake and watershed. For those already on our electronic mailing list—FoDCL will be distributing our newsletters, *Lake Lowdowns*, *Fact Sheets*, and more via the website. To subscribe to our email list, contact us at contact@friendsofdcl.org. Please take a look at <http://friendsofdcl.org/>, and let us know what you think!

Special thanks to Chris Haseler, who stepped in and shared his magic!



-----Return to : FoDCL, 779 Chadderton School Road, Oakland MD 21550-----



Please consider making a donation now. A donation to Friends of Deep Creek Lake is a wise investment supporting volunteer efforts to protect and preserve our wonderful lake, as well as protecting your financial investment. All donations are tax deductible!

NAME(S) _____

PRIMARY ADDRESS _____

CITY/STATE/ZIP _____

EMAIL: _____

LAKE ADDRESS _____ SECTION OF DCL _____

Donation: Friend@\$30 Steward@\$100 Lakekeeper@\$250+ Youth/Senior @ \$20

Let Us Know: What is your reaction to our website? What are your specific concerns? How are we doing?

*Friends of Deep Creek Lake
779 Chadderton School Road
Oakland, MD 21550*

Printed on non-chlorine bleached 100% Post-consumer Recycled Paper