



# Presentation to Board of Garrett County Commissioners

May 15, 2012

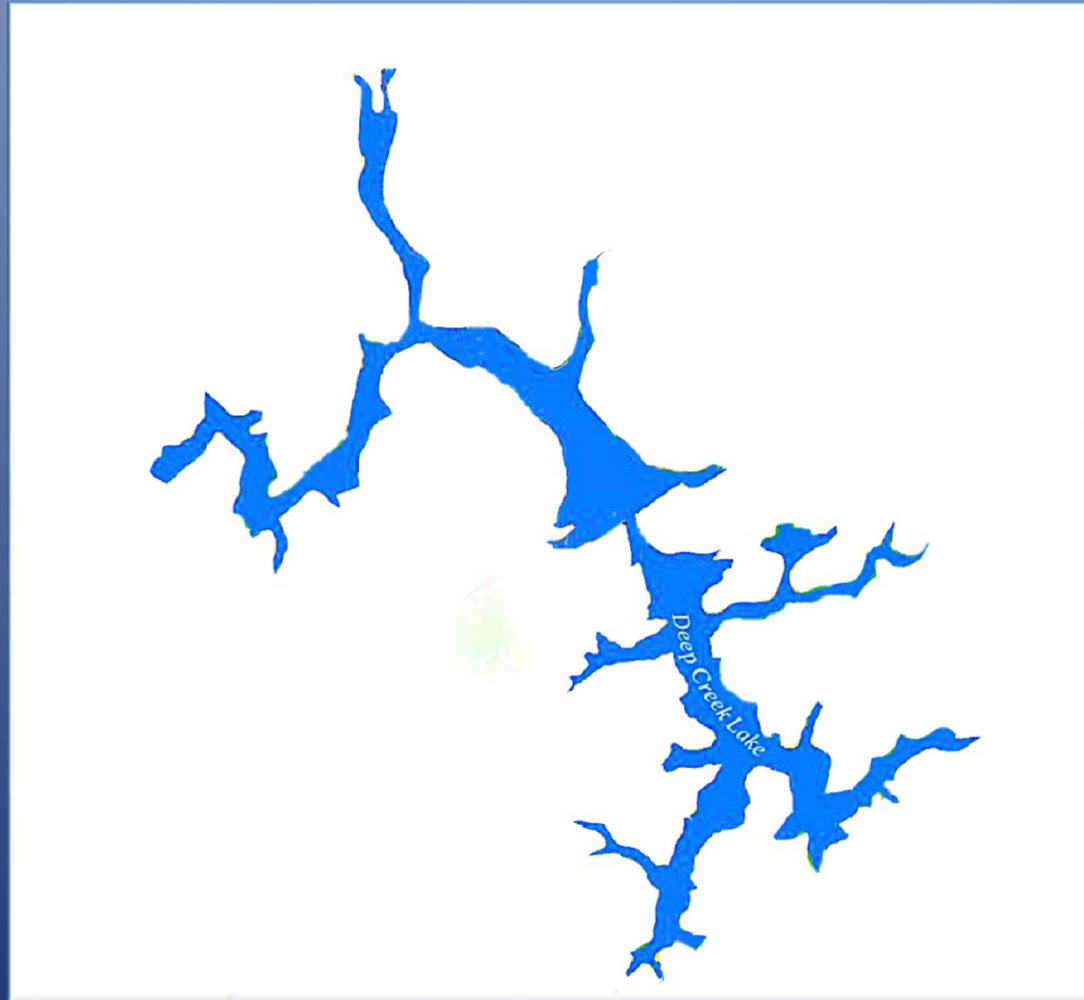
- PHASE II, SEDIMENT STUDY PLAN
- RECOMMENDATIONS

***“Our collective challenge is  
creating a broader watershed  
view of Deep Creek Lake”***

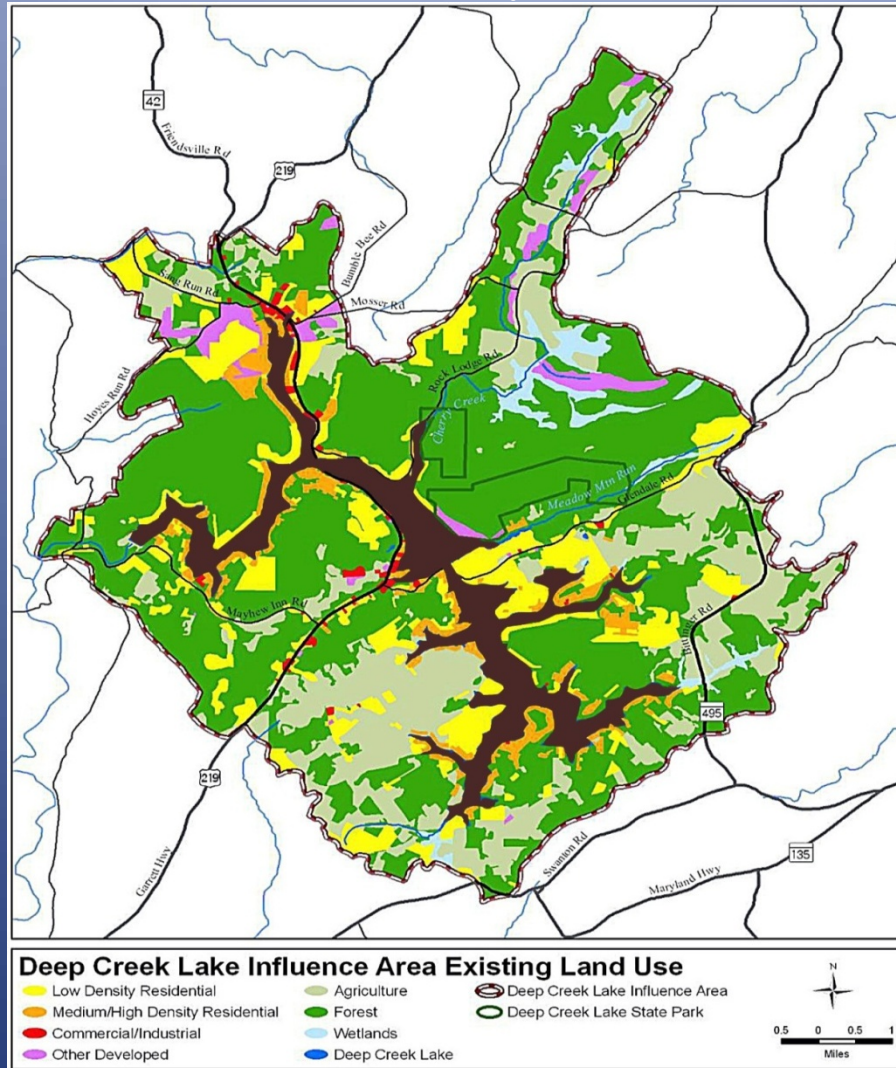
*Secretary John Griffin, 11/15/11,  
Presentation to the Board of Garrett County Commissioners*

•

Lake view:  
State owns bottom and buffer strip.  
DNR responsible for lake management.

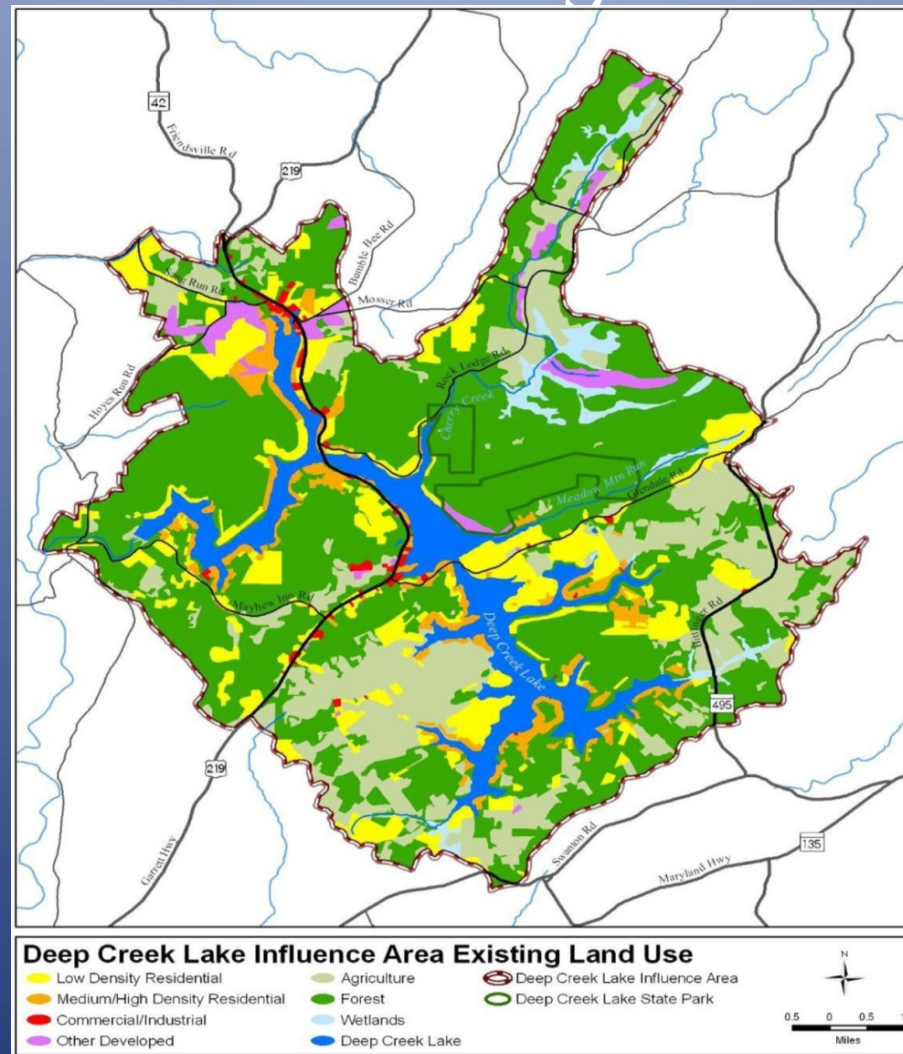


# Watershed view: Surrounding land and streams. County responsibility.





“Broad watershed view”:  
Lake and watershed together  
as one ecosystem.



*How does Phase II rate?*

- DNR lake-centric study will be successful
  - Study fails in “broader watershed view”
- Results incomplete bases for implementation

# Limits of lake-centric view

Phase II will not assess

Watershed sources

Watershed land uses

Alternative options

Role for County

# *Missing Components*

*Missing: Sediment flows from tributaries  
after rain event*



*Chadderton School Rd July 2002 – one of 4 most impacted coves. Note  
good shoreline buffering*



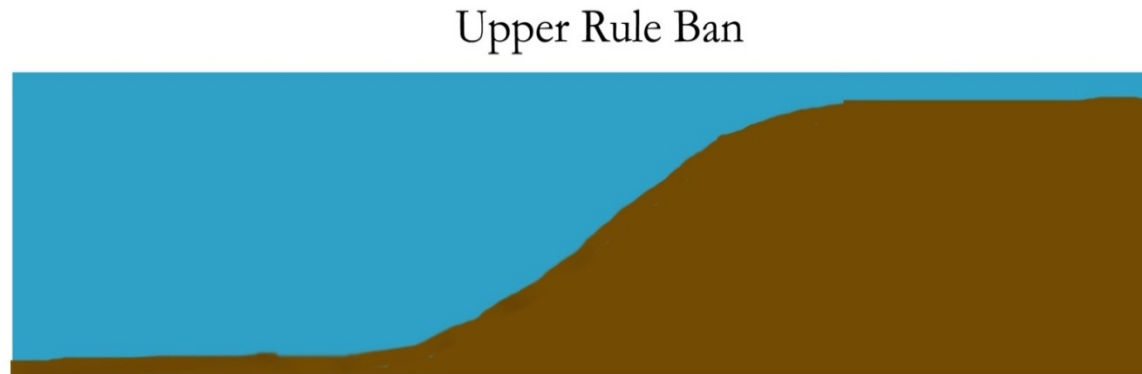
Missing: Sediment flow from tributary  
Here after 2+ weeks without rain.



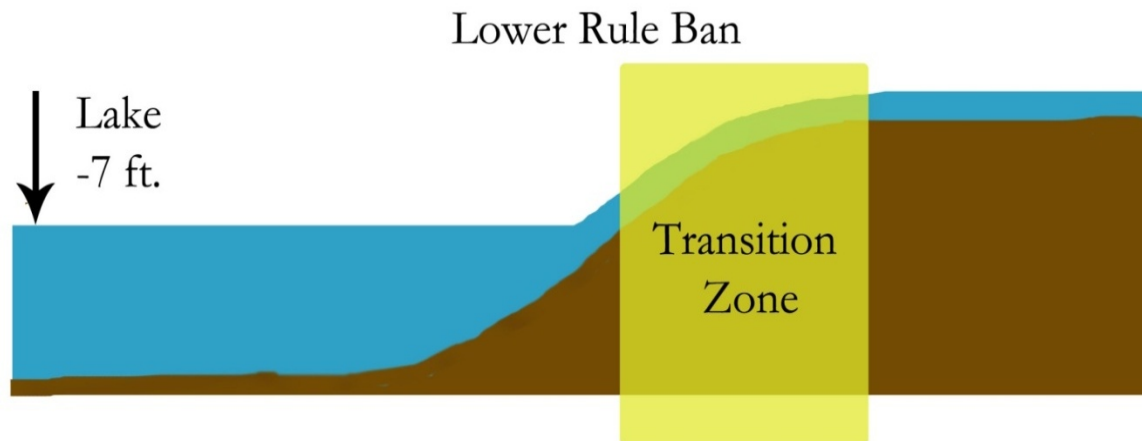


# Missing: Sedimentation from water withdrawals.

Spring –  
Lake and  
Stream levels  
the same



Fall – Lake 7  
feet lower  
causing  
erosion in  
Transition  
Zone





*Undercutting of tributary riparian buffer in  
Transition Zone, releasing sediment*



## *Missing: Riparian Buffer Assessment*

No “geo-referencing”  
110 miles of tributary streams.



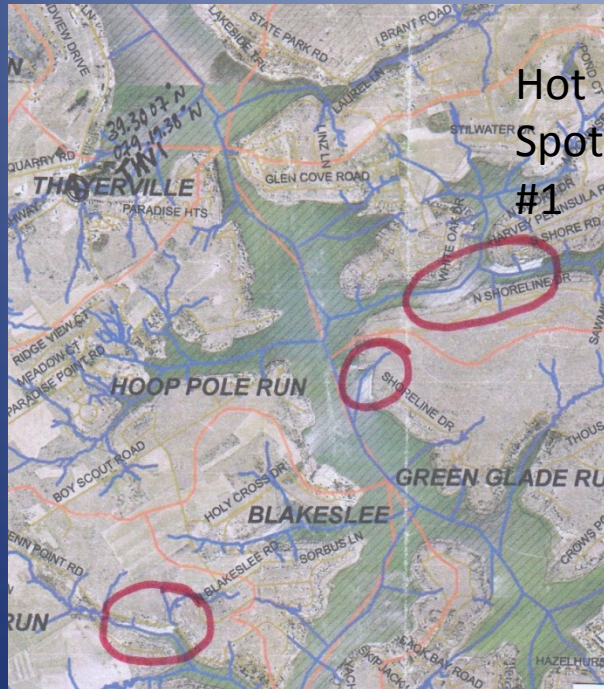


# Missing: Agricultural Runoff





# Missing: Runoff from culverts



Hot Spot #1

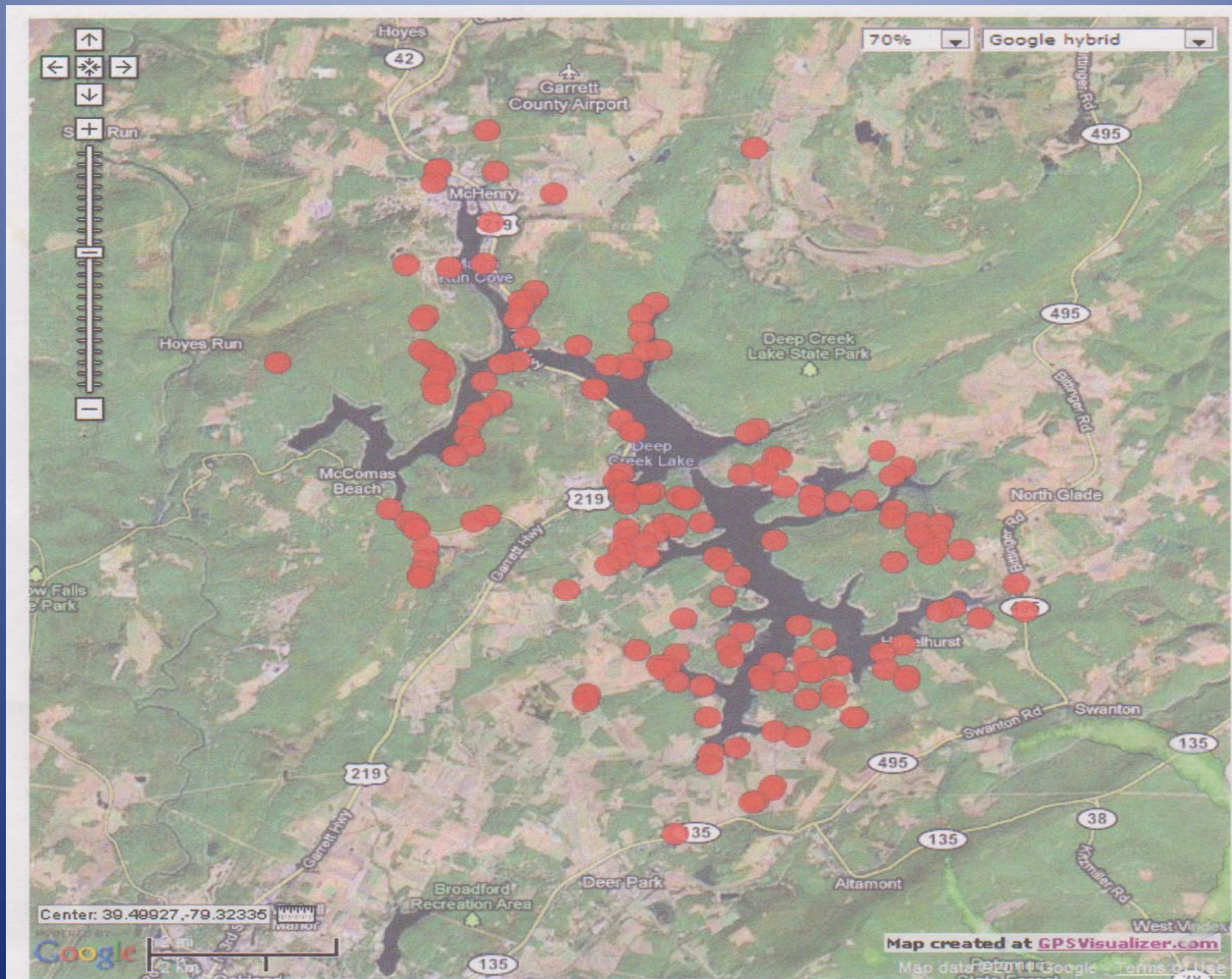




*County Road culvert runoff impacts  
property and DNR Buffer strip*



# County culverts found throughout the watershed





## *Missing: large impermeable surfaces impacts*



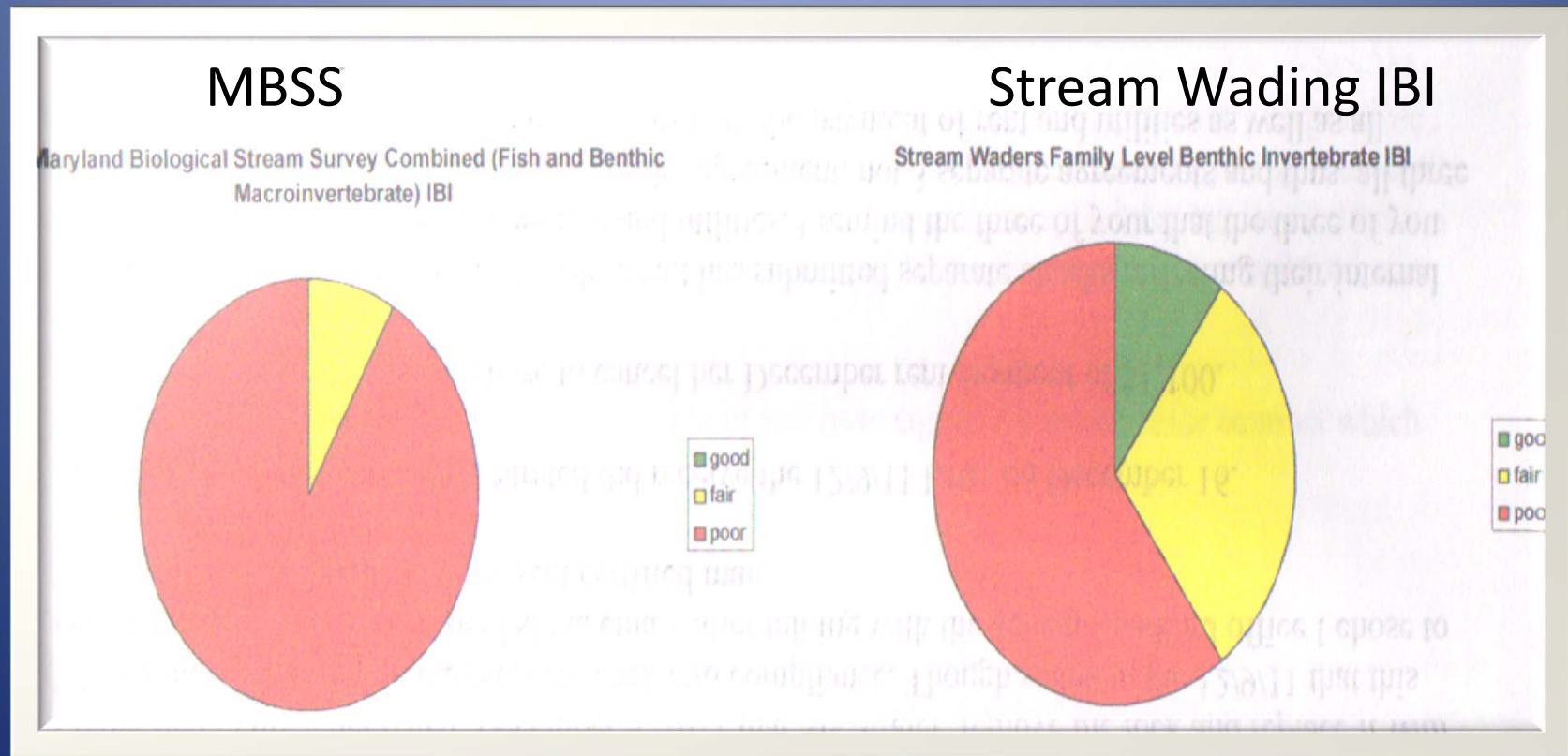
*Center for Watershed Protection scientists identified  
8 "sites of serious concern".*

The new County Fairgrounds parking lot a new site “of serious concern”.





# Missing : water quality and sediment core sampling



Key:                      Green- good                      Yellow- fair                      Orange -- poor

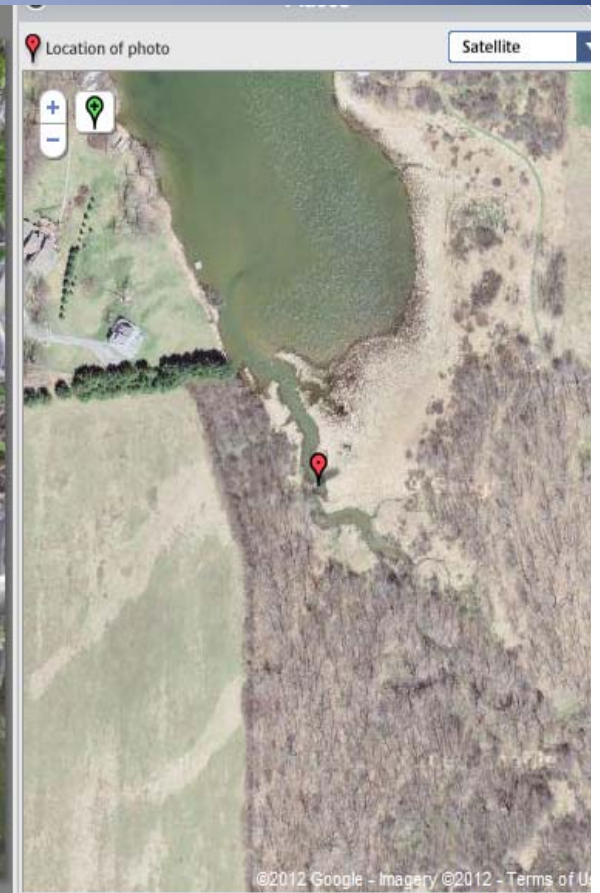
*Missing: assessment of other land uses*



*Junk yard at head of Chadderton School cove tributary.*



## Missing: other impacts on streams



Beaver dam on Chadderton School Cove stream-  
geo-referencing map

- *What is the impact?*

## Delay

- more sediment accumulation
- decrease recreational use
- reduction of property valuation
- loss of business income
- threat to tourist destination
- increase cost of study



# What delay looks like



*Pawn Run, August, 2010 from boat tour by County staff*

# RECOMMENDATIONS FOR IMMEDIATE ACTION

Recommendation #1  
Change financial policy

Commensurate with the  
watershed's economic and  
fiscal importance to the  
County

## 2013 draft budget

<u>direct</u> revenue	c\$25,000,000
<u>direct</u> revenue lake permit fees.	c\$200,000

Expenditures for DCL WIP, culverts, riparian buffer, staff	c\$0
--	------

## Recommendation #2: Watershed study

Contract with consulting group  
for watershed study immediately

# Recommendation #3

Add watershed unit within County  
government



# Recommendation #4 Partner with stakeholders.

*Create a Citizens' Advisory Committee for  
the Deep Creek Watershed in 2013*

*Recommendation of DCL Watershed Economic  
Growth and Planning Analysis Study, 2004*



*The beginning  
Deep Creek as it flows into the lake*

